

Level Mate III

Level Measurement System



Description

The AMETEK LEVEL MATE III Level System uses a stainless steel transmitter as standard. A series of perforations in the bottom of the unit protects the sensing port from either clogging or damage. The same snub-nosed end can also unscrew, allowing for easy calibration checks.

The customized LEVEL MATE III meter displays data from the transmitter, provides excitation voltage and transmits an analog signal for remote recording, alarm or control functions. It is easy to calibrate by front panel adjustments. Its programmable relay permits set and reset programming. The large, easy-to-read LED display gives local indication while the optional isolated analog output can interface with ancillary display, recording or control devices. Combined into one convenient package, the AMETEK LEVEL MATE III Level System provides you with the most versatile level measurement system on the market!

Features

- Two-year factory warranty on the system
- Intrinsically safe (Model 575S, 575P and 675)
- Solid-state silicon sensor with milliamp output
- Rugged stainless steel sensor housing – excellent environmental protection
- Excellent media compatibility
- Sensor vented to the atmosphere through the surface end of the cable
- Microprocessor-controlled meter for quick, easy setup and calibration
- Large dual line 6 digit display, 0.60" & 0.46"
- Selectable setup via front keys
- Programmable displays and function keys
- Meter can be calibrated for inches of water, feet of water, meters of water, or any desired engineering units
- Multi pump alternation control
- Options Include

Lightning and secondary surge protectors

4 relay expansion module

Meter copy programming cable

4-20 mA analog output from meter

USB serial communication kit for configuring, monitoring and datalogging from a PC using DDMC MeterView software

Applications

Complete easy-to-use system – all in one package

Variety of reliable stainless steel sensors

Microprocessor-controlled digital display

Setpoints and signal outputs for remote monitoring, recording and control

Continuous measurement and display

Simple installation, virtually no maintenance

Low system pricing



Continuous Level Measurement

Level Mate III

Specifications: for model 575 as standard sensor, see specific datasheets for other sensor specs.

Ranges:

- **Feet of Water:** 0 to 14, 0 to 35, 0 to 69, 0 to 138, 0 to 230, 0 to 345, 0 to 460, 0 to 690
- **Meters of Water:** 0 to 4, 0 to 10, 0 to 21, 0 to 42, 0 to 70, 0 to 105, 0 to 140, 0 to 210

Transmitter Temperature Ranges:

- **Max. Operating:** -40° to 82°C (-40° to 180°F); media must not freeze
- **Compensated:** -5° to 55° C (23° to 130°F)
- **Temp. Effects:** Typical $\pm 1\%$ output change for $\pm 25^\circ$ C temp. change within compensated range when calibrated at 25°C
- **Accuracy:** $\pm 0.25\%$ full scale (including linearity, hysteresis, repeatability) B.F.S.L.

Transmitter Output:

- 4 to 20mADC, limited to 30 mADC

Transmitter Power Supply:

- 24 VDC from meter

Transmitter Electrical Connection:

- Attached #20 AWG polypropylene insulated and shielded conductors in a black polyurethane jacket. Unspliced lengths to 3000 ft. (1622 m)

Meter Housing Construction:

- Fiberglass reinforced polyester

Transmitter Cable Color Code:

- RED (+) excitation
- BLACK (-) excitation,
- GREEN (caseground).

Transmitter Construction

- Diaphragm: Type 316L stainless steel
- Housing Type: 316 stainless steel
- Nut/Washer Type: 316 stainless steel
- Cable Grommet: Viton

Meter Display:

- LED Display
- Upper Display: 0.60" (15mm) high
- Lower Display: 0.46" (12mm) high
- Both displays 6 Digits (-99999 to 99999)

Meter Input Voltage:

- 85 to 265 VAC @ 50/60 Hz, 90-265 VDC, 20 W max

Meter Ranges:

- Calibrated to transmitter range in psi, inches, feet, meters of water, or other desired engineering units -9999 to 99999.

Meter Temperature Ranges

- Operating: -40° to 65° C (-40° to 150°F)
- Storage: -40° to 85°C (-40° to 185°F)

Meter Output:

- Isolated 4-20 mA.
- While the output is nominally 4-20 mA, the signal will accurately accommodate under and over ranges from 1 to 23 mA.

Meter Relay Outputs:

- N.O.
- Form C (SPDT) relays rated 3 A @ 30 VDC and 125 / 250 VAC resistive load.

Specifications subject to change without notice.

Continuous Level Measurement

Level Mate III

Model Numbering

Base Model		
LM		
Sensor Type	Sensor Model Number	Display Range
5	575SB0006RLS	0 to 13.8ft (0 to 4.2m)
	575SB0015RLS	0 to 34.6ft (0 to 10.5m)
	575SB0030RLS	0 to 69.2ft (0 to 21.1m)
	575SB0060RLS	0 to 138.4ft (0 to 42.2m)
	575SB0100RLS	0 to 230.7ft (0 to 70.3m)
	575SB0150RLS	0 to 346.0ft (0 to 105.4m)
	575SB0200RLS	0 to 461.3ft (0 to 140.5m)
P	575PB0006RLS	0 to 13.8ft (0 to 4.2m)
	575PB0015RLS	0 to 34.6ft (0 to 10.5m)
	575PB0030RLS	0 to 69.2ft (0 to 21.1m)
	575PB0060RLS	0 to 138.4ft (0 to 42.2m)
	575PB0100RLS	0 to 230.7ft (0 to 70.3m)
	575PB0150RLS	0 to 346.0ft (0 to 105.4m)
	575PB0200RLS	0 to 461.3ft (0 to 140.5m)
6	675PB0006MLS	0 to 13.8ft (0 to 4.2m)
	675PB0015MLS	0 to 34.6ft (0 to 10.5m)
	675PB0030MLS	0 to 69.2ft (0 to 21.1m)
3	375SB0006RLSV	0 to 13.8ft (0 to 4.2m)
	375SB0015RLSV	0 to 34.6ft (0 to 10.5m)
	375SB0060RLSV	0 to 138.4ft (0 to 42.2m)
	375SB0100RLSV	0 to 230.7ft (0 to 70.3m)
S	SSTS0006NLSV	0 to 13.8ft (0 to 4.2m)
	SSTS0015NLSV	0 to 34.6ft (0 to 10.5m)
	SSTS0030NLSV	0 to 69.2ft (0 to 21.1m)
	SSTS0060NLSV	0 to 138.4ft (0 to 42.2m)
	SSTS0100NLSV	0 to 230.7ft (0 to 70.3m)
D	SDTS0006RLSV	0 to 13.8ft (0 to 4.2m)
	SDTS0015RLSV	0 to 34.6ft (0 to 10.5m)
	SDTS0030RLSV	0 to 69.2ft (0 to 21.1m)
	SDTS0060RLSV	0 to 138.4ft (0 to 42.2m)
	SDTS0100RLSV	0 to 230.7ft (0 to 70.3m)
	SDTS0150RLSV	0 to 346.0ft (0 to 105.4m)
Meter Output		other power & relay options available, consult factory
A		2 relays
B		2 relays, 4-20mA output (specify output & calibrated range)
DC Surge Protection		
0		No DC surge protection
1		Surge protection for signal line between meter and transmitter (LM912)
2		Surge protection for signal line between meter and customer equipment (LM912)
3		Surge protection for signal lines between meter & transmitter and meter and customer equipment (LM912 X 2)
AC Surge Protection		
0		No AC surge protection
1		115 VAC surge protection for input line to the meter (LM918)
2		230 VAC surge protection for input line to the meter (LM919)

LM 5 A 0 0

Accessories

- * Length of model 575 / 575P, standard, factory installed, non vent tube, polyurethane, waterproof cable (4 cond / 22AWG)
- * Length of model 675 / 375 / SST, standard, factory installed, vent tube, polyurethane, waterproof cable (3 cond / 22AWG)
- * Length of model SDT, standard, factory installed, non vented tube, polyurethane, waterproof cable (6 cond / 24 AWG)
- Metal conduit connector for NEMA 4X weathertight housing (0.11 to 0.26 cable Ø range)
- Cable strain relief cord grip for NEMA 4X weathertight housing (0.16 to 0.31 cable Ø range)
- Cable strain relief cord grip for NEMA 4X weathertight housing (0.20 to 0.35 cable Ø range)
- Surge protector for excitation & signal lines between meter and transmitter
- Surge protector for 115 VAC line to the meter
- Surge protector for 230 VAC line to the meter
- USB serial communications adaptor kit (for programming meter & software download)
- Reusable desiccant for Level Mate box
- 8" desiccant for transmitter with vented cable
- 4 relay expansion module (see DDMC manual for details)
- Meter copy cable (see DDMC manual for details)

Part Number

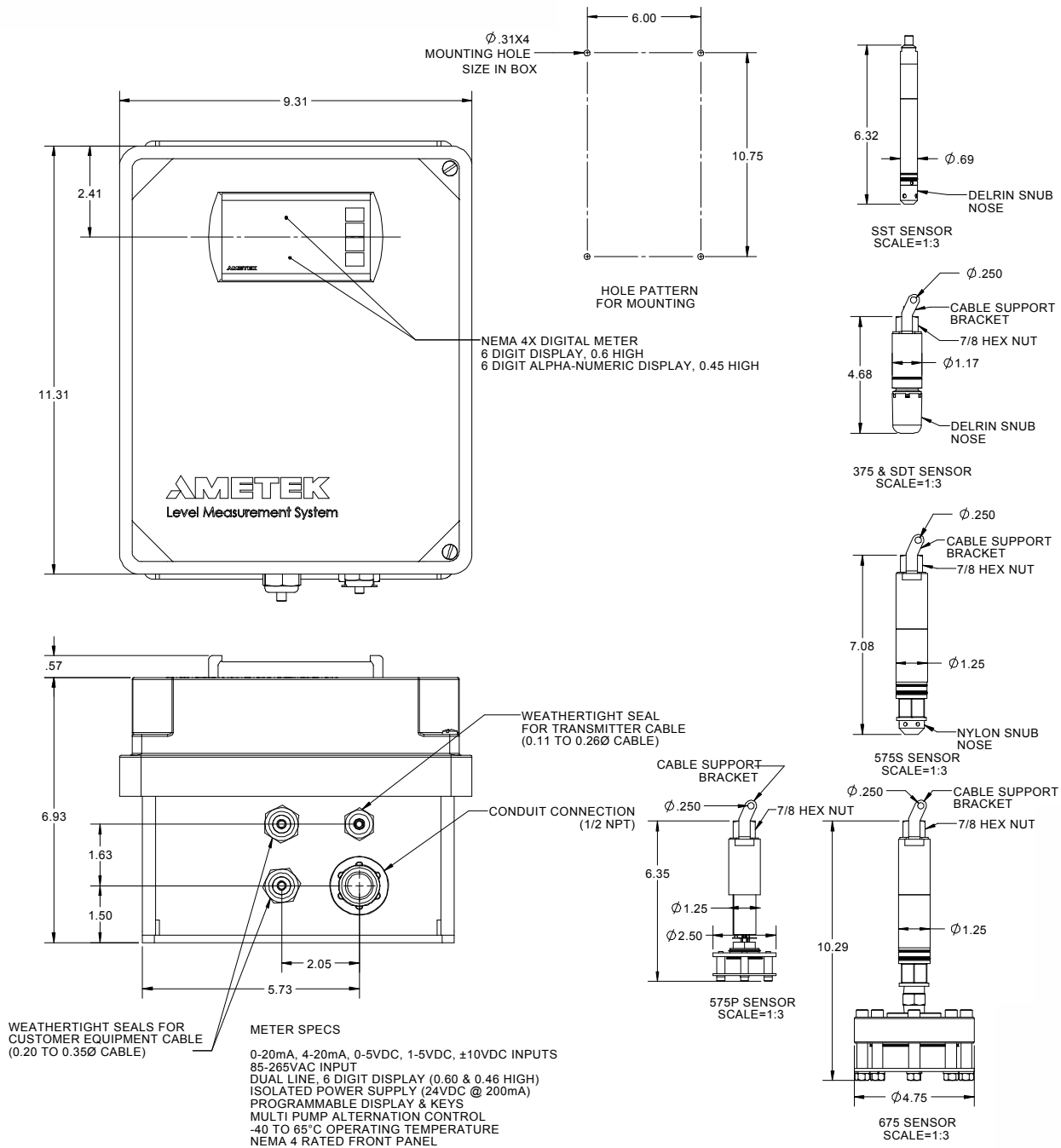
- K515076
- K515072
- K515136
- K554149
- K554167
- K554148
- LMA912
- LMA918
- LMA919
- K516131
- K234432
- K234436
- K740366
- K516132

* Consult factory for other cable options

Continuous Level Measurement

Level Mate III

Dimensions



AMETEK® DREXELBROOK®

205 Keith Valley Road, Horsham, PA 19044 U.S.A.

Tel: 215-674-1234 Fax: 215 674-2731

Email: drexelbrook.info@ametek.com

Web: www.drexelbrook.com