

ML-CW-R-OEM/TKS-1550 ML-CW-P-OEM/TKS-1550 Series

KeyFeatures

Up to 40W CW of output power

PM version available up to 20W

Excellent beam quality ($M^2 < 1.1$)

Highly reliable laser diode pumps

Maintenance free operation

Benchtop or OEM format

RS 232 / USB

Compact & rugged design

Safety interlock

Air cooled

Applications

Micromachining

Measurement

Telecom

Component testing

R&D

Medical

ISRUZ Product Line

1.5 μ m CW High Power Fiber Lasers

The ML-CW-R-OEM-1550 or ML-CW-R-TKS-1550 is a compact CW Fibre Laser at 1.5 μ m delivering up to 40W of output power, through a near diffraction limited beam ($M^2 < 1.1$). The excellent beam quality and power stability make the 3SPGroup fibre laser a multi-purpose tool. Our patented "Injection Technology" allows the use of highly reliable broad area laser diode pumps, for a cost-effective and maintenance-free operation. The all-fibre design guarantees the robustness of the laser, without any optical parts to align or to stabilize. The unit is available in polarization maintaining version (ML-CW-P-OEM-1550 and ML-CW-P-TKS-1550 series) with optical output power up to 20W. These lasers are ideal solutions for a broad range of industrial, medical and scientific applications.



For moreInfo

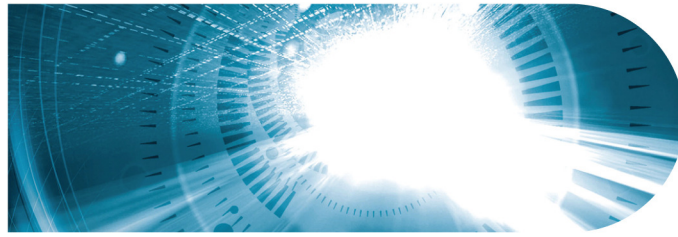
Please contact us at:

North America: 514.748.4848

888.922.1044

Europe & Asia: +33 (0)2 96 04 20 00

or via e-mail at sales@3spgroup.com



ML-CW-R-TKS-1550
ML-CW-P-TKS-1550
Series

SPECIFICATIONS
STANDARD CONFIGURATIONS

Parameter	Value	Unit
Operation mode	CW - modulated	-
Nominal output power	1 3 5 10 15 20 30 40	W
Output power tunability	10 – 100	%
Long term stability (RMS, over 1h@20°C)	<+/- 2	%
External TTL modulation frequency	Up to 3.0	KHz
Laser wavelength	typical 1550	nm
Signal linewidth (FWHM)	<3	nm
Laser output configuration	Gaussian profile	-
Polarization Extinction Ratio	>20 >20 >18 >18 >15 >15 NA NA	dB
Output fibre length	1	m
Output connector	FC/APC - Collimated	-
Output isolation	Optional	-
Typical beam diameter @1/e ²	2 - 5	mm
Beam quality M ²	< 1.1	-
Dimensions	3U 19" (448 x 451 x 132)	mm ³
Weight	< 13	kg
Storage / Operation Temperature	0 to + 50 / + 15 to + 35	°C
Control mode	ACC	-
Control interface	Front panel or USB	-
Operating voltage AC	88 to 264	V
Typ. power consumption (@ 25°C)	<600	W

Ordering Information:

MLxx-CW-y-TKS-1550
xx = Output power in Watts
y = R for Random, P for Polarized

Options:

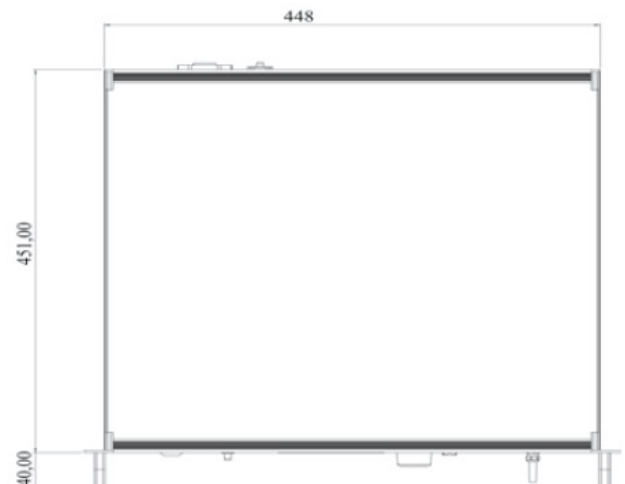
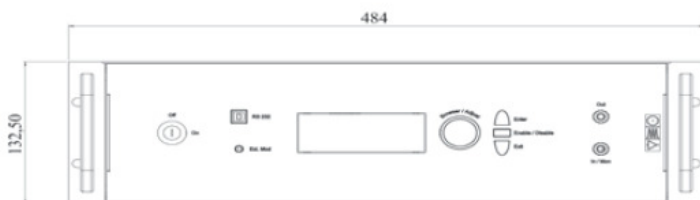
Different collimating optics
Back reflection output isolator
Customised specs on request
Extended warranty

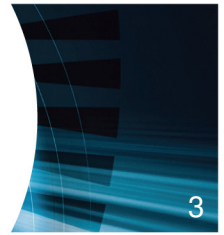
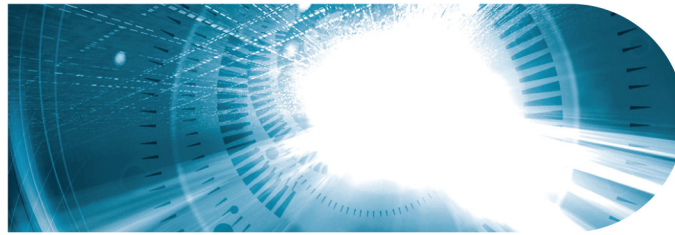
Operating and safety considerations
3SPGroup Fibre lasers comply with CE,
FDA & RoHS.
All 3SPGroup Fibre Lasers are patent
pending.

The 3SPGroup Fibre lasers emit both
invisible Class IV and visible Class II
radiations. Direct and scattered radiation
can be harmful to the human eye. Proper
laser safety eyewear must be worn
during operation.
Information in this document is subject to
change without notice.



MECHANICAL DRAWINGS





ML-CW-R-OEM-1550
ML-CW-P-OEM-1550
Series

SPECIFICATIONS
STANDARD CONFIGURATIONS

Parameter	Value	Unit
Operation mode	CW - modulated	-
Nominal output power	1 3 5 10 15 20 30 40	W
Output power tunability	10 – 100	%
Long term stability (RMS, over 1h@20°C)	1.5	%
External TTL modulation frequency	Up to 3.0	KHz
Laser wavelength	typical 1550	nm
Signal linewidth (FWHM)	0.2	nm
Laser output configuration	Gaussian profile	-
Polarization Extinction Ratio	>20 >20 >18 >18 >15 >15 NA NA	dB
Output fibre length	5	m
Output connector	FC/APC - Collimated	-
Output isolation	Optional	-
Typical beam diameter @1/e ²	2 - 5	mm
Beam quality M ²	< 1.1	-
Dimensions	108 x 70 x 20 230 x 178 x 65 270 x 255 x 75	mm ³
Weight	0.2 - < 4	kg
Storage / Operation Temperature	-20 to + 55 / + 10 to + 40	°C
Control mode	ACC	-
Control interface	RS-232 & Analog	-
Operating voltage DC	5 – 12-36	V
Typ. power consumption (@ 25°C)	<25 <50 <150 <250 <600	W

Ordering Information:

MLxx-CW-y-OEM-1550
xx = Output power in Watts
y = R for Random, P for Polarized

Options:

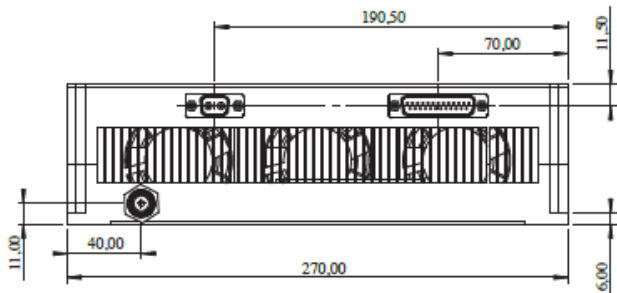
Different collimating optics
Back reflection output isolator
Customised specs on request
Extended warranty

Operating and safety considerations
3SPGroup Fibre lasers comply with CE, FDA & RoHS.
All 3SPGroup Fibre Lasers are patent pending.

The 3SPGroup Fibre lasers emit both invisible Class IV and visible Class II radiations. Direct and scattered radiation can be harmful to the human eye. Proper laser safety eyewear must be worn during operation.
Information in this document is subject to change without notice.



MECHANICAL DRAWINGS

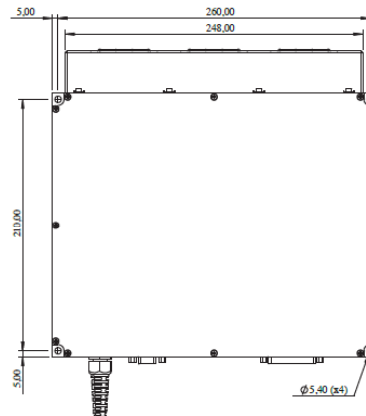


Revised November 2012

Please note: information in this document is typical and must be specifically confirmed in writing by your supplier before it becomes applicable to any order or contract. Information is subject to change without notice.
©2011 3S PHOTONICS S.A.S

ORDERING INFO

Please contact your Sales Manager. 3SPGroup can also develop custom products to meet a wide range of technical requirements.



3SPGroup
North America: 514.748.4848
888.922.1044
Europe and Asia: +33 (0)2 96 04 20 00
www.3sphotronics.com • sales@3sphotronics.com

